



University
of Otago

ŌTĀKOU WHAKAIHU WAKA



OTAGO

OPEN DAYS

HE RĀ TIROTIRO KI
ŌTĀKOU WHAKAIHU WAKA

Sunday 3 May

Info sessions

9–10am

Geology	9:30–9:50am	Benson Common Room, Geology Building
Health Sciences First Year \diamond	9:30–10:20am	Castle 1 & 2
Philosophy, Politics & Economics (PPE)	9:30–10:20am	Burns 2

10–11am

Arts & Social Sciences overview	10–10:20am	Archway 2
Economics	10:30–10:50am	Archway 4
Geography & Environmental Management	10–10:50am	Archway 1
Medicine & Surgery	10:30–10:50am	Castle 1 & 2
Physiology	10:30–10:50am	Burns 2
Sustainable Energy	10:30–10:50am	Archway 2

11am–12pm

Agricultural Innovation	11:30–11:50am	Archway 2
Combined degrees: BACom, BAsSc, BComSc	11–11:20am	Castle 2
Commerce overview	11:30–11:50am	Castle 2
Computer Science & Software Engineering	11–11:50am	Archway 4
Entrepreneurship	11–11:20am	Burns 2
Food Science	11–11:20am	Archway 2
Genetics	11–11:20am	Burns 1
Law	11–11:50am	St David
Neuroscience	11:30–11:50am	Castle 1
Physiotherapy	11–11:20am	Castle 1
Radiation Therapy	11:30–11:50am	Burns 1
Theology	11–11:20am	Archway 1

12–1pm

Anatomy (presentation & tour)	12–12:50pm	Anatomy Museum, Lindo Ferguson 270 Great King St
Biochemistry	12:30–12:50pm	Castle 2
Botany, Ecology, Marine Science & Zoology	12–12:50pm	Castle 1
Business Analytics	12:30–12:50pm	Archway 4
Data Science	12–12:20pm	Archway 4
Global Studies	12–12:20pm	Archway 2
Human Nutrition & Sport & Exercise Nutrition	12:30–12:50pm	Burns 1
Marketing	12–12:20pm	Castle 2
Medical Laboratory Science	12–12:20pm	Burns 1
Philosophy	12:30–12:50pm	Archway 2

Physics	12–12:20pm	Burns 2
Psychology	12–12:50pm	St David
Surveying, Land Planning & Development, & Geographic Information Systems	12–12:50pm	Archway 1

1–2pm

Accountancy	1:30–1:50pm	Burns 1
Bachelor of Health Sciences	1:30–1:50pm	Castle 2
Bioethics	1:30–1:50pm	Burns 2
Biomedical Sciences	1–1:20pm	Castle 2
Criminology	1–1:20pm	St David
English & Linguistics	1:30–1:50pm	Archway 1
Forensic Analytical Science	1:30–1:50pm	St David
Geology	1–1:20pm	Benson Common Room, Geology Building
History	1–1:20pm	Archway 1
Management, Human Resource Management & International Business	1–1:20pm	Burns 1
Pharmacy	1–1:20pm	Castle 1
Pharmaceutical Science	1:30–1:50pm	Castle 1
Religious Studies	1–1:20pm	Archway 2
Social Anthropology	1:30–1:50pm	Archway 2
Statistics	1–1:20pm	Archway 4

2–3pm

Chemistry	2:30–2:50pm	St David
Finance & Sustainable Finance	2–2:20pm	Burns 1
Health Sciences First Year \diamond	2–2:50pm	Castle 1 & 2
Microbiology & Immunology	2:30–2:50pm	Burns 2
Social & Community Work	2–2:20pm	Archway 2
Theatre Studies	2–2:50pm	Allen Hall

3–4pm

Medicine & Surgery	3–3:20pm	Castle 1 & 2
--------------------	----------	--------------

\diamond HSFY is the essential first step for the five professional programmes: Dental Surgery, Medical Laboratory Science, Medicine and Surgery, Pharmacy, and Physiotherapy.

Monday 4 May

Activities & tours

Classics (collection tour)*	1-1:50pm & 2-2:50pm	Tūhura Otago Museum
	*Meet in the ground floor foyer	
Dance (workshop)	12-1pm	Dance Studio, College of Education Gym 159 Union St East
Dentistry (tour)	11am-12pm & 1-2pm	Faculty of Dentistry 310 Great King St
Finance* (45-minute sessions)	11am, 1pm, 2pm	Bloomberg Lab, Otago Business School
	*Spaces are limited. Sign up at the expo.	
Geography & Environmental Management (activity)	10:50-11am	Leith Steps (opposite Clocktower)
Geology (self-guided tour)	10am-3pm (drop-in)	Geology Museum, Geology Building (South end)
If anyone can be a media influencer, who decides what's true? (panel discussion)	2:30-3:20pm	Burns 1
Marine Science (tour)*	10:45am-1:15pm & 12:15-2:45pm	Portobello Marine Lab, Otago Peninsula
	*One hour at the facility, plus 45 minutes travel either end. Transport will be provided to and from campus. Spaces are limited. Register at otago.ac.nz/open-days	
Music (recording studio tour)	1-2pm	Te Korokoro o te Tūi 141 Union St East
Physics (Quantum world of atoms)	9:30-10:20am	Archway 4
Physiology (activity)	11am-12pm	G10 & G11, Lindo Ferguson 270 Great King St
Physiotherapy (tour)*	11:30am-12pm	School of Physiotherapy 325 Great King St
	*Meet in the ground floor foyer.	
When everyone has a voice, why do so few get heard? (panel discussion)	10-10:50am	Burns 1
Zoology (Leith River activity)*	1:30-2:30pm	Marples Building 340 Great King St
	*Meet at the front steps. Weather dependent - cancelled if wet.	
Zoology (tour)*	1-3pm	Marples Building 340 Great King St
	*Meet at the front steps. Tours running every 30 minutes (last tour begins 2:30pm).	

Info sessions

9-10am

Arts & Social Sciences overview	9-9:20am	Archway 1
Bioethics	9:30-9:50am	Archway 4
Data Science	9:30-9:50am	Archway 3
Ecology	9-9:20am	Archway 2
Global Studies	9-9:20am	OBS G.19
Health Sciences First Year ♦	9-9:20am	Castle 1 & 2
Medicine & Surgery	9:30-9:50am	Castle 1 & 2
Religious Studies	9:30-9:50am	OBS G.19
Social Anthropology	9:30-9:50am	Archway 1
Social & Community Work	9-9:20am	Archway 3
Zoology	9:30-9:50am	Burns 2

10-11am

Biochemistry	10:30-10:50am	Burns 2
Botany	10-10:20am	Archway 1
Classics, Latin & Greek	10-10:20am	Archway 4
Commerce overview	10:30-10:50am	UniCol dining room
Human Nutrition & Sport & Exercise Nutrition	10:30-10:50am	St David
Law	10-10:50am	Castle 1 & 2
Music	10:30-10:50am	Te Korokoro o te Tūi 141 Union St East
Radiation Therapy	10-10:20am	Burns 2
Sociology & Gender Studies	10:30-10:50am	Archway 1
Theatre Studies	10-10:20am	Mary Hopewell, College of Education Drama Centre 145 Union St East
Tourism	10-10:20am	OBS 1.17

11am-12pm

Accountancy	11:30-11:50am	UniCol dining room
Bachelor of Performing Arts & Dance	11-11:30am	Dance Studio, College of Education Gym 159 Union St East
Chemistry	11-11:20am	Burns 1
Combined degrees: BACom, BASc, BComSc	11-11:20am	Castle 2
English & Linguistics	11-11:20am	Archway 2
Exercise & Sport Science, Sport Development & Management, Physical Education, Activity & Health	11-11:50am	St David
Genetics	11:30-11:50am	Castle 1
Geology	11:30-11:50am	Archway 2
Marketing	11-11:20am	UniCol dining room
Medical Laboratory Science	11:30-11:50am	Castle 2

Monday 4 May

Neuroscience	11–11:20am	Castle 1
Physics	11:30–11:50am	Burns 1
Surveying, Land Planning & Development, & Geographic Information Systems	11–11:50am	Hutton Theatre, Tūhura Otago Museum
Teaching & Education	11–11:50am	College of Education Auditorium

12–1pm

Bachelor of Health Sciences	12:30–12:50pm	Burns 2
Biomedical Sciences	12–12:20pm	Castle 1
Commerce overview	12:30–12:50pm	Archway 3
Finance & Sustainable Finance	12–12:20pm	UniCol dining room
Forensic Analytical Science	12–12:20pm	Burns 2
Geography & Environmental Management	12–12:50pm	Hutton Theatre, Tūhura Otago Museum
History	12:30–12:50pm	Archway 4
Management, Human Resource Management & International Business	12:30–12:50pm	UniCol dining room
Media, Film & Communication	12–12:20pm	Archway 4
Pharmacy	12:30–12:50pm	Castle 1
Philosophy, Politics & Economics (PPE)	12–12:50pm	Archway 1
Psychology	12–12:50pm	St David
Sustainable Energy	12–12:20pm	Archway 3

1–2pm

Criminology	1–1:20pm	St David
Entrepreneurship	1:30–1:50pm	UniCol dining room
Health Sciences First Year ◊	1–1:20pm	Castle 1 & 2
Languages & Cultures	1–1:20pm	Archway 2
Māori, Pacific & Indigenous Studies	1:30–1:50pm	Burns 1
Marine Science	1–1:20pm	Burns 1
Mathematics & Computational Modelling	1–1:20pm	Archway 4
Medicine & Surgery	1:30–1:50pm	Castle 1 & 2
Pharmaceutical Science	1–1:20pm	Burns 2
Pharmacology & Toxicology	1:30–1:50pm	Burns 2
Philosophy	1–1:20pm	Archway 1
Politics	1:30–1:50pm	Archway 2
Statistics	1:30–1:50pm	Archway 4
Surveying, Land Planning & Development, & Geographic Information Systems	1–1:50pm	Hutton Theatre, Tūhura Otago Museum
Theology	1:30–1:50pm	OBS G.17

2–3pm

Agricultural Innovation	2:30–2:50pm	Burns 2
Archaeology	2–2:20pm	Archway 2
Computer Science & Software Engineering	2–2:50pm	Archway 4
Dental Surgery, Dental Technology & Oral Health	2–2:50pm	St David
Economics	2–2:20pm	UniCol dining room
Food Science	2–2:20pm	Burns 2
Microbiology & Immunology	2–2:20pm	Castle 1
Physiology	2:30–2:50pm	Castle 1
Physiotherapy	2–2:20pm	Castle 2

Activities & tours

Archaeology (40-minute tours)*	11am & 1pm	Richardson Building
*Spaces are limited. Register at otago.ac.nz/open-days		
Exercise & Sport Science, Sport Development & Management, Physical Education, Activity & Health*	11:50am–12:50pm	School of Physical Education, Sport & Exercise Science 55 Union St West
*Drop-in interactive lab activities & demos		
Finance (45-minute sessions)*	9am & 12pm	Bloomberg Lab, Otago Business School
*Spaces are limited. Sign up at the expo.		
Geography & Environmental Management (activity)	10:50–11am	Leith Steps (opposite Clocktower)
Geology (self-guided tour)	10am–3pm (drop-in)	Geology Museum, Geology Building (South end)
Philosophy, Politics & Economics (The political economy of debt)*	3–5pm	Seminar Room B St David
*Students only due to limited space. Register at otago.ac.nz/open-days		
Physics (lab tours)*	11am & 1:30pm (40 minutes)	Science 3 Building (Science library entrance)
*Spaces are limited. Sign up at the expo		
Physiotherapy (tour)*	1–1:30pm	School of Physiotherapy 325 Great King St
*Meet in the ground floor foyer.		
Zoology (tour)*	10am–12pm	Marples Building 340 Great King St

*Meet at the front steps. Tours running every 30 minutes (last tour begins 11:30am).

◊ HSFY is the essential first step for the five professional programmes: Dental Surgery, Medical Laboratory Science, Medicine and Surgery, Pharmacy, and Physiotherapy.

Info sessions

Entrance scholarships

Sunday, 2–2:20pm | St David Lecture Theatre

Monday, 10–10:20am | University College (UniCol) dining room

Monday, 1:30–1:50pm | Archway 1 Lecture Theatre

International students

Monday, 10–10:50am | OBS G.19

Campus tour: Monday, 11–11:30am | Leave from outside OBS

Locals community – for first-years not living in a college

Sunday, 2:30–2:50pm | Archway 2 Lecture Theatre

Monday, 11–11:20am | OBS 1.17

Otago Global Student Exchange

Monday, 9:30–9:50am | Archway 2 Lecture Theatre

Pathway | Te Huarahi

Academic programmes for students who have just missed UE.

Monday, 11:30–11:50am | OBS 1.17

Schools' Liaison – transitioning to University

Sunday, 9:30–9:50am, 11:30–11:50am, 2–2:20pm | Archway 1 Lecture Theatre

Monday, 9–9:20am | Burns 2 Lecture Theatre & 10:30–10:50am | OBS 1.17

Student Support Services – the overall picture

Sunday, 9:30–9:50am | St David Lecture Theatre

Drop-in

Disability Information and Support

Monday, 8:30am–4:30pm | Information Services Building (ISB), 65 Albany Street

Health Sciences support

A range of support for Māori, Pacific and international students, those who attended schools of high socioeconomic disadvantage (EQ programme), and those of refugee or rural backgrounds studying Health Sciences.

Find us at the HSFY expo stand for more information.

Libraries

Visit otago.ac.nz/library/hours and filter by each library for location and opening hours.

Pacific Islands Centre

Sunday & Monday, 8:30am–5pm | 520 Castle Street North

Te Huka Mātauraka | The Māori Centre

Sunday, 10am–3:30pm & Monday, 8:30am–5pm

515/519 and 523 Castle Street North

Te Oraka – campus thrift shop

Monday, 11am–1pm | Sustainability Office, 109 Saint David Street

Te Pou Whirinaki – Student Wellbeing Hub

Sunday, 9am–3pm & Monday, 8:30am–5pm | West End, Central Library

Unipol Recreation Services

All facilities are free of charge over Otago Open Days weekend for prospective students and whānau. Take a look around, play a game, or hit the gym!

Saturday, 8am–9pm | Sunday, 9am–10pm | Monday, 6am–10pm

Unipol Recreation Centre, 130 Anzac Avenue

Academic Expos

Explore your study options across Otago's four academic divisions. Chat with staff and current students, ask questions, and get the inside scoop on the wide range of courses, majors, and career pathways on offer. Our academic expos are all about helping you uncover new opportunities, make confident decisions, and find the perfect fit for your future.

Sunday, 10am–2pm

Monday, 9am–2pm

Business and Humanities: Otago Business School

Health Sciences and Sciences: The Link, Union Building



Student Experience Expo

Discover the wide range of services designed to support your wellbeing, life and learning at Otago. Connect with representatives from Student Services, Global Exchange, University Sports, Clubs and Societies, Disability Support, the Students' Association, StudyLink, Scholarships, the Social Impact Studio – and so much more! We've also got exciting performances, activities, games and freebies to keep you entertained. Don't miss your chance to get involved, get informed, and explore what Otago has to offer.

Sunday, 10am–2pm | Central Library

Monday, 9am–2pm | Central Library



Campus tours

Sunday and Monday:

Leaving every hour between 10am–2pm

Meet near the Union Lawn statue.



Sign up for the
Otago Open Days app



Residential colleges

Most first-year students live in one of our 15 residential colleges, which are located on or close to campus. Offering three catered meals a day, personal and academic support, and a lively social calendar, they're a great way to meet new people and ease into student life.

Info sessions – find out about college life

Sunday, 10–10:50am | St David Lecture Theatre

Monday, 9–9:50am | University College (UniCol) dining room

Tour at your own pace

Aquinas

Minutes' walk from campus: 30
(daily shuttle to/from campus)

74 Gladstone Road, Dalmore

otago.ac.nz/aquinas

Arana

Minutes' walk from campus: 10

110 Clyde Street, North Dunedin

otago.ac.nz/arana

Caroline Freeman

Minutes' walk from campus: 10

911 Cumberland Street,

North Dunedin

otago.ac.nz/freeman-college

Carrington

Minutes' walk from campus: 15

57 Heriot Row, North Dunedin

otago.ac.nz/carrington

192 Castle

Minutes' walk from campus: 15

192 Castle Street, Central Dunedin

otago.ac.nz/192castle

Cumberland

Minutes' walk from campus: 15

250 Castle Street,

Central Dunedin

otago.ac.nz/cumberland

Hayward

Minutes' walk from campus: 15

110 Frederick Street,

Central Dunedin

otago.ac.nz/hayward

Knox

Minutes' walk from campus: 25

(daily shuttle to/from campus)

3 Arden Street, North East Valley

knoxcollege.ac.nz

College tours

Sunday & Monday, 9am–3pm (colleges open 9am–4pm, last bus departs 3pm)
Saturday by appointment only – please contact each college directly.

A hop-on hop-off bus will be departing approximately every 20 minutes from 9am outside the Visitors' Centre (find the Otago sign on the map).

The bus will loop around the following off-campus colleges: Knox, Salmond, Aquinas, Caroline Freeman, Toroa, Carrington, and Cumberland.

You can choose to walk to other nearby colleges or back to campus from these stops. Check out the college map to see what's close by!

Salmond

Minutes' walk from campus: 20

(daily shuttle to/from campus)

19 Knox Street, North East Valley

salmondcollege.ac.nz

Selwyn

Minutes' walk from campus: 0

560 Castle Street,

North Dunedin

selwyn.ac.nz

St Margaret's

Minutes' walk from campus: 0

333 Leith Street, North Dunedin

stmargarets.college

Studholme

Minutes' walk from campus: 10

127 Clyde Street, North Dunedin

otago.ac.nz/studholme

Te Rangihiroa

Minutes' walk from campus: 10

15 Forth Street, North Dunedin

otago.ac.nz/terangihiroa

Toroa

Minutes' walk from campus: 10

8 Regent Road, North Dunedin

otago.ac.nz/toroa

University College (UniCol)

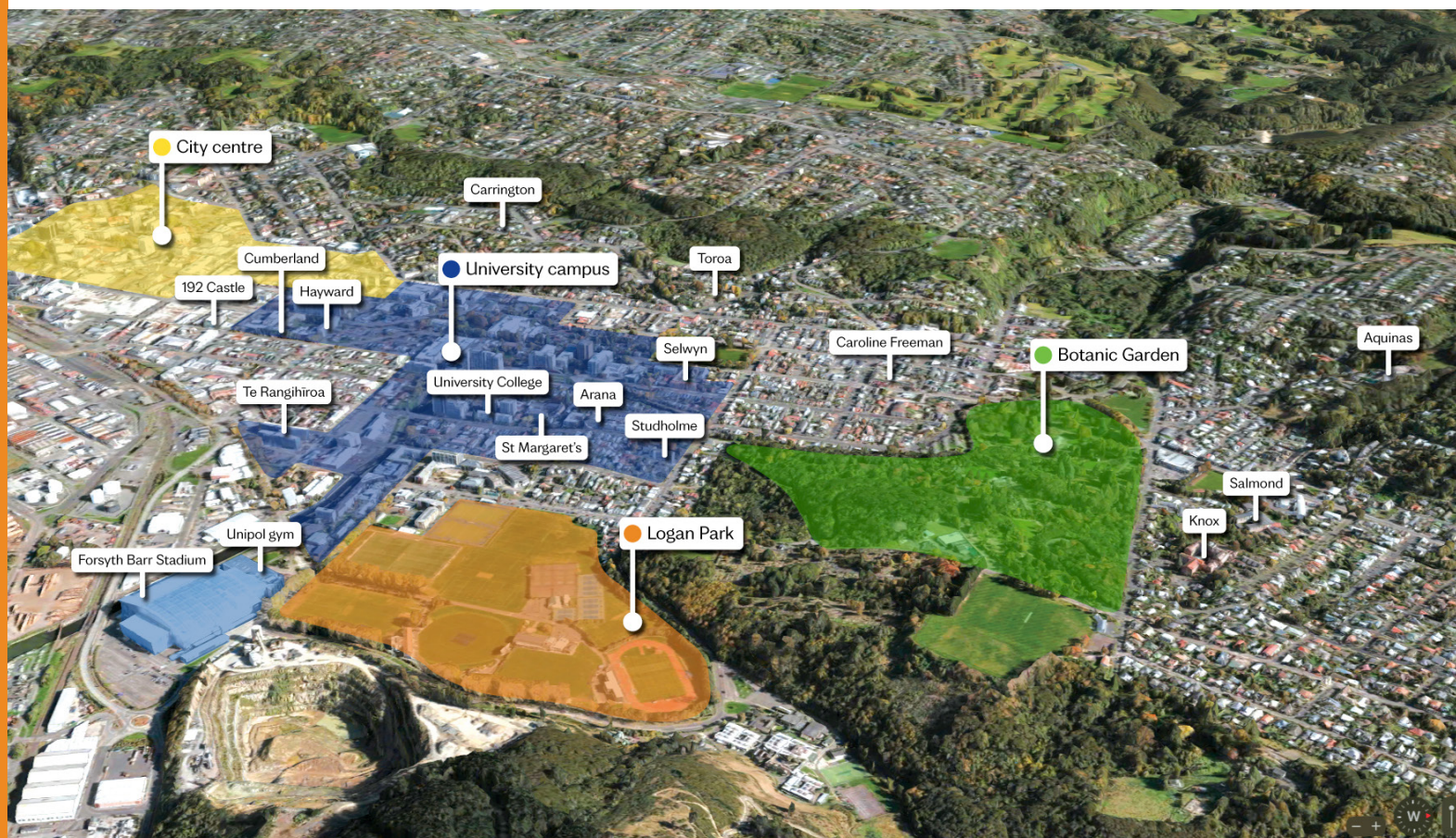
Minutes' walk from campus: 0

315 Leith Street, North Dunedin

otago.ac.nz/unicol

*Approximate walking times from the Clocktower

Residential colleges map



Campus map



We recognise the importance of the whenua our University is built upon, and the local tribal authorities who have mana whenua here. Our three principal rūnanga in Dunedin are Te Rūnaka o Ōtākou, Kāti Huirapa Rūnaka ki Puketeraki, and Te Rūnanga o Moeraki.



University
of Otago
ŌTĀKOU WHAKAIHU WAKA